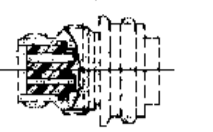
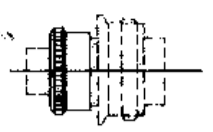
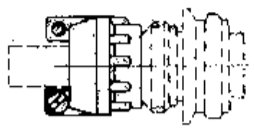
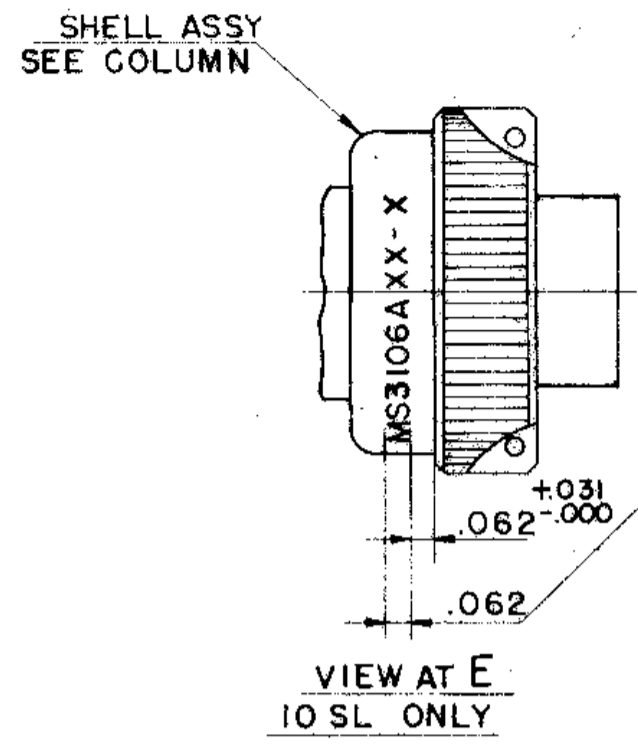


**ACCESSORIES
(NOT PART OF STANDARD ASSEMBLY)**

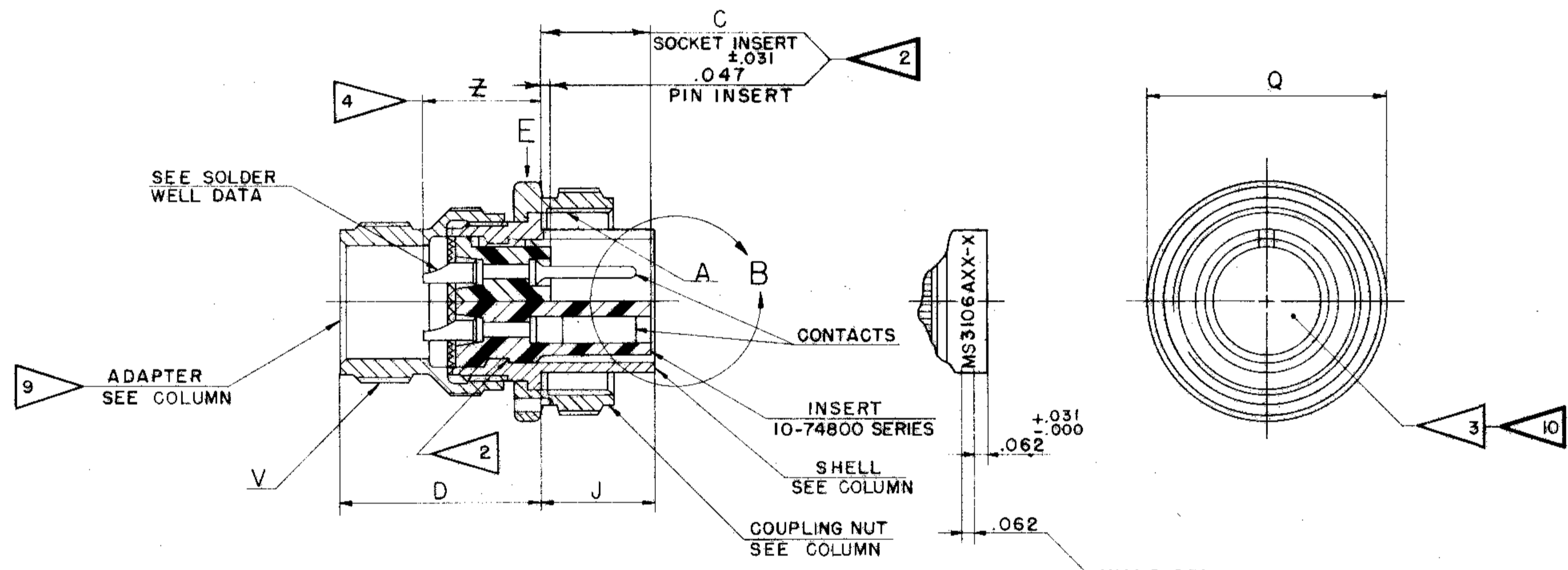
 GROMMET 10-40800 SERIES	 GROMMET RETAINING NUT SEE TABLE
 CABLE CLAMP 10-35900-XX3 SERIES	

REL	WAS	DATE	D'MAN	APPD.
32508-157				
1 33750-57	ADD. NOTE II B DATA.	1-21-58	MOORE	
2 35826-4	RELOC & REV C DIM AND .000 +.016 -.047	8-30-59	BARTKOW	
A1 36200 -27	188(16M), 250(12) & 500(4) (SOLDER WELL DEPTH); REM SOLDER WELL DATA FOR 16	2-11-60	MAKOWSKI	
A 36525 -325	REM PD COL (A & V THD) REV. NOTE 3, Q DIA COL, ADD NOTE 12	3-17-60	MAKOWSKI	
A3 36525 -448	ADDED NOTE 13, REV NOTE 12	7-5-60	PAWLICK	
A4 42525 -45	MIL-C-5015C (NOTE 1)	10-2-63	MILLAR	
A5 51175 -1	REM NOTE II, REVISION LETTER (C) (3 PLCS)	11-7-69	Randall	
A 53249 -14	ADD. 9-3895 (PRO SPEC) REV STAMPING NOTE	1-6-72	Randall	
B 76208 -1	(CL II) REV MS COL	4/30/85	BOWKER	



STAMP PER 9-2811
EXAMPLE:
MS3106A10SL-3S BENDIX-7139

NUT MUST TURN FREELY
AFTER STAMPING



STAMP PER 9-2811
MS NO., "BENDIX" & DATE CODE (9-3895)
OPPOSITE KEYWAY
EXAMPLE:
MS3106A20-12S BENDIX-7139

FOR SUFFIX OTHER THAN "P" OR "S",
STAMP PER 9-2437
(SUFFIX OF MS NO. ONLY)
EXAMPLE:
MS3106A20-12SX BENDIX-7139

10-168608 THRU
10-168640

SOLDER WELL DATA

CONTACT SIZE	0	4	8	12	16M
WELL DIA	469 ⁺⁰⁰⁵ / ₋₀₀₃	332 ⁺⁰⁰⁵ / ₋₀₀₃	209 ⁺⁰⁰⁴ / ₋₀₀₂	116 ⁺⁰⁰⁴ / ₋₀₀₂	.078 ⁺⁰⁰⁴ / ₋₀₀₂
WELL DEPTH ⁺⁰³¹ / ₋₀₀₀	.625	.625	.500	.375	.250

MATERIAL SPEC.	PROCESS SPEC. SEE SHEET 2	SCINTILLA MAGNETO DIVISION BENDIX AVIATION CORPORATION MONEY, N. Y., U.S.A.				TOLERANCES UNLESS OTHERWISE SPECIFIED	
HEAT TREAT SPEC.	FINISH SPEC.	NAME CONNECTOR, ELECTRICAL PLUG, TYPE C (1) MC				FRACTIONS ±	ANGLES ±
		D'MAN A S MEYER				DECIMALS ±.010	CONVERSION BY
		DATE 4-24-57				STAMPING BY	WEIGHT-LB SEE PART LIST
		TOOL ACC. CON. REC. 22543-A				SCALE NONE	10-168608 THRU 10-168640

SEE SHEET 2.
NOTES: REF SYMBOL

USE OF THIS DOCUMENT IS UNLIMITED. DOCUMENTS
REFERENCED HEREON CONTAIN LIMITED RIGHTS DATA.

REL	32500-157	WAS	DATE	D'MAN	APPD.
1	33750-57	SEE SHEET 1	1-21-58	MOORE	
2	35820-4	SEE SHEET 1	8-30-59	BARTKOW	
A1	36200-27	SEE SHEET 1	2-11-60	MARKUSH	
A2	34525-325	SEE SHEET 1	3-17-60	MARKUSH	
A3	36525-448	SEE SHEET 1	7-5-60	PAWLOCK	
A4	42525-45	SEE SHEET 1	10-26-63	MALAR	

A5
A6
B
SEE SHEET 1 FOR ALL CHANGES

ASSEMBLY NO.	MS NO.	DIMENSIONS							DETAILS			ACCESSORY
		A THREAD CLASS 2B	C +.047 -.000	D	J ±.005	Q DIA MAX	V THREAD (PLATED) CLASS 2A	Z ±.045	SHELL	COUPLING NUT	ADAPTER	GROMMET RETAINING NUT
10-168608-	3106 A 8S-	.5000-28 UNEF	.531	.859 ±.030	.531	.741	.5000-28 UNEF	.562	10-37266-8	10-37265-8	10-37267-8	10-37269-8
10-168610-	10S-	.6250-24 NEF	.531	.937 ±.030	.531	.869	.5000-28 UNEF		10-37266-10	10-37265-10	-10	-10
10-168611-	10SL-	.6250-24 NEF	.531	.937 ±.025	.531	.946	.6250-24 NEF		10-113488-11 (SHELL ASSY)		-12	-12
10-168612-	12S-	.7500-20 UNEF	.531	.937 ±.030	.531	.995			10-37266-12	10-37265-12	-12	-12
10-168613-	12-	.7500-20 UNEF	.719	1.124 ±.030	.719	.995		.812	-13	-13	-13	-13
10-168614-	14S-	.8750-20 UNEF	.531	.937 ±.030	.531	1.123	.7500-20 UNEF	.562	-14	-14	-14	-14
10-168615-	14-	.8750-20 UNEF	.719	1.124 ±.030	.719	1.123	.7500-20 UNEF	.812	-15	-15	-15	-15
10-168616-	16S-	1.0000-20 UNEF	.531	.937 ±.030	.531	1.250	.8750-20 UNEF	.562	-16	-16	-16	-16
10-168617-	16-	1.0000-20 UNEF	.719	1.124 ±.030	.719	1.250	.8750-20 UNEF	.812	-17	-17	-17	-17
10-168618-	18-	1.1250-18 NEF		1.219 ±.030		1.333	1.0000-20 UNEF		-18	-18	-18	-18
10-168620-	20-	1.2500-18 NEF		1.125 ±.030		1.461	1.1875-18 NEF		-20	-20	-20	-20
10-168622-	22-	1.3750-18 NEF		1.219 ±.030		1.588	1.1875-18 NEF		-22	-22	-22	-22
10-168624-	24-	1.5000-18 NEF		1.251 ±.030		1.715	1.4375-18 NEF		-24	-24	-24	-24
10-168628-	28-	1.7500-18 NS		1.470 ±.030		1.968	1.4375-18 NEF		-28	-28	-28	-28
10-168632-	32-	2.0000-18 NS		1.439 ±.030		2.209	1.7500-18 NS		-32	-32	-32	-32
10-168636-	36-	2.2500-16 UN		1.500 ±.030		2.463	2.0000-18 NS		-36	-36	-36	-36
10-168640-	40-	2.5000-16 UN		1.469 ±.030		2.718	2.2500-16 UN		-40	-40	-40	-40

10-168608 THRU
10-168640



13. FOR DIMENSIONS AND STAMPING ON ALL ARRANGEMENTS WITH SUFFIX -50 OR ABOVE SEE INDIVIDUAL DRAWING OF SAME SHELL SIZE & SUFFIX IN 10-41600 SERIES.
12. FOR PART NUMBERS 10-168617-13, 10-168618-15, & 61 - SEE INDIVIDUAL DRAWINGS 10-168617-13, 10-168618-15, & 61-00000.
- 11.
10. INSERTS AND CONTACTS ARE REMOVABLE.
9. ADAPTER MUST BE REMOVED WHEN GROMMET RETAINING NUT IS USED.
8. ALL LOCKWIRE HOLES ARE .045 DIA MIN.
7. SEE DRAWINGS 10-168008 THRU 10-168040 10-168208 THRU 10-168240 FOR REQUIRED MATING RECEPTACLE ASSEMBLIES.
6. SEE WORK ORDER FOR PERMISSIBLE ADDITIONAL OR ALTERNATE STAMPING.
5. TO COMPLETE ASSEMBLY NUMBER & MS NUMBER, ADD APPLICABLE INSERT ARRANGEMENT SUFFIX TO BASE NUMBERS LISTED ABOVE (FOR ALTERNATE ARRANGEMENTS, REFER TO 9-2437.) TO DETERMINE DESIRED INSERT ARRANGEMENT, SEE PARTS LISTS 10-168608 THRU 10-168640.
4. INCREASE Z DIMENSION BY 3/2 FOR SIZE "O" CONTACT ONLY.
3. FOR CONTACT SIZE, SPACING, & SERVICE RATING, SEE DRAWINGS MS33680 THRU MS33690.
2. DIMENSIONS MUST BE MAINTAINED WHEN INSERTS ARE PRESSED FIRMLY AGAINST INDICATED SHOULDER.
1. THE UNITS ILLUSTRATED MEET THE REQUIREME OF MS3016A, PER SPEC MIL-C-5015(D).

NOTES: REF SYMBOL

MATERIAL SPEC.	PROCESS SPEC. TEST 9-3106-5	SCINTILLA MAGNETO DIVISION BENDIX CORPORATION Schenectady, N.Y., U.S.A.				TOLERANCES UNLESS OTHERWISE SPECIFIED	
HEAT TREAT SPEC.	ASSY 9-3103-1	NAME CONNECTOR ELECTRICAL PLUG, TYPE C () MC				FRACTIONS ± .010	ANGLES
TOOL ACC.	9-2811, 9-2437 9-3895	D'MAN CHECKER ASMEY BAIN TIC				DECIMALS ± .010	CONCENTRICITY
		DATE BYDS CH. D'MAN APPROVED SCALE				SURFACE ROUGHNESS MICRO-INCHES RMS VALUE MAX	
		4-25-57 57.57				NEXT ASSEMBLY	
		NONE				WEIGHT - LBS SEE PARTS LIST	
		DWG SIZE C				SUPERSEDED BY	
		CODE 77820				AND IS NOT INTERFERED BY	
						10-168608 THRU 10-168640	
						SHEET 2 OF 2	

Mouser Electronics

Authorized Distributor

Click to View Pricing, Inventory, Delivery & Lifecycle Information:

Amphenol:

[MS3106A10SL-3P](#) [MS3106A10SL-3S](#) [MS3106A10SL-4S](#) [MS3106A14S-2P](#) [MS3106A14S-2S](#) [MS3106A14S-5P](#)
[MS3106A14S-5S](#) [MS3106A14S-6P](#) [MS3106A14S-6S](#) [MS3106A14S-7P](#) [MS3106A14S-7S](#) [MS3106A16-10P](#)
[MS3106A16-10S](#) [MS3106A16-11P](#) [MS3106A16-11S](#) [MS3106A16S-1P](#) [MS3106A16S-1S](#) [MS3106A16S-8P](#)
[MS3106A16S-8S](#) [MS3106A18-11P](#) [MS3106A18-11S](#) [MS3106A18-19P](#) [MS3106A18-19S](#) [MS3106A18-1P](#)
[MS3106A18-1S](#) [MS3106A20-23P](#) [MS3106A20-23S](#) [MS3106A20-27P](#) [MS3106A20-27S](#) [MS3106A20-29P](#)
[MS3106A20-29S](#) [MS3106A20-4P](#) [MS3106A20-4S](#) [MS3106A20-7P](#) [MS3106A20-7S](#) [MS3106A22-14P](#) [MS3106A22-](#)
[14S](#) [MS3106A22-19P](#) [MS3106A22-19S](#) [MS3106A22-22P](#) [MS3106A22-22S](#) [MS3106A22-23P](#) [MS3106A22-23S](#)
[MS3106A22-2P](#) [MS3106A24-11P](#) [MS3106A24-11S](#) [MS3106A24-28P](#) [MS3106A28-16P](#) [MS3106A28-21P](#)
[MS3106A28-21S](#) [MS3106A28-6S](#) [MS3106A32-17SW](#) [MS3106A22-8SX](#) [MS3106A32-1P](#) [MS3106A20-15SW](#)
[MS3106A18-4P](#) [MS3106A18-4S](#) [MS3106A24-10P](#) [MS3106A28-3S](#) [MS3106A32-17PW](#) [MS3106A28-15P](#)
[MS3106A20-3P](#) [MS3106A20-33S](#) [MS3106A20-19P](#) [MS3106A16S-1PW](#) [MS3106A22-14PW](#) [MS3106A22-8SY](#)
[MS3106A32-9P](#) [MS3106A12S-3P](#) [MS3106A12S-3S](#) [MS3106A14S-1P](#) [MS3106A14S-5SX](#) [MS3106A14S-9P](#)
[MS3106A14S-9S](#) [MS3106A16-9P](#) [MS3106A16-9S](#) [MS3106A16S-4P](#) [MS3106A16S-5S](#) [MS3106A16S-6S](#)
[MS3106A18-10S](#) [MS3106A18-15P](#) [MS3106A18-1SW](#) [MS3106A18-20S](#) [MS3106A18-3P](#) [MS3106A18-3PW](#)
[MS3106A18-3S](#) [MS3106A18-8P](#) [MS3106A18-8S](#) [MS3106A18-9P](#) [MS3106A18-9S](#) [MS3106A18-9SW](#) [MS3106A20-](#)
[11P](#) [MS3106A20-11S](#) [MS3106A20-14P](#) [MS3106A20-15P](#) [MS3106A20-15S](#) [MS3106A20-16P](#) [MS3106A20-16S](#)
[MS3106A20-16SX](#) [MS3106A20-18P](#)