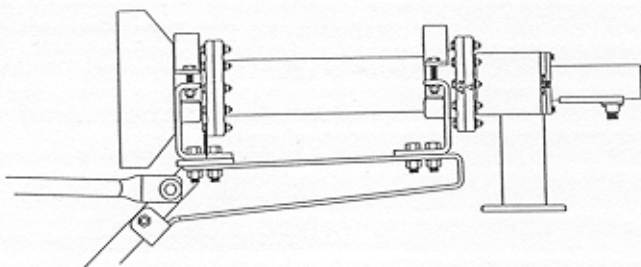


Circular Polarization



Circular Polarization

The transmit polarization sense of a Intelsat Approved C-Band antenna is represented in the Prodelin part number as -R or -L. This representation defines whether the polarization sense for the feed is right-hand or left-hand. A circular polarization reversal occurs when the signal from the feed system is reflected off of the antenna reflector surface.

Therefore, when utilizing a transponder with a transmit polarization sense of left-hand circular, an antenna with a transmit polarization of right-hand circular will be required, and a satellite transmit polarization sense of right-hand circular will require a feed with a transmit polarization of left-hand circular.

The circular polarization configuration can be easily converted to the opposite polarization sense by rotating the polarizer with respect to the OMT as described in the installation manual shown on page 3 of the feed configurations text.

