

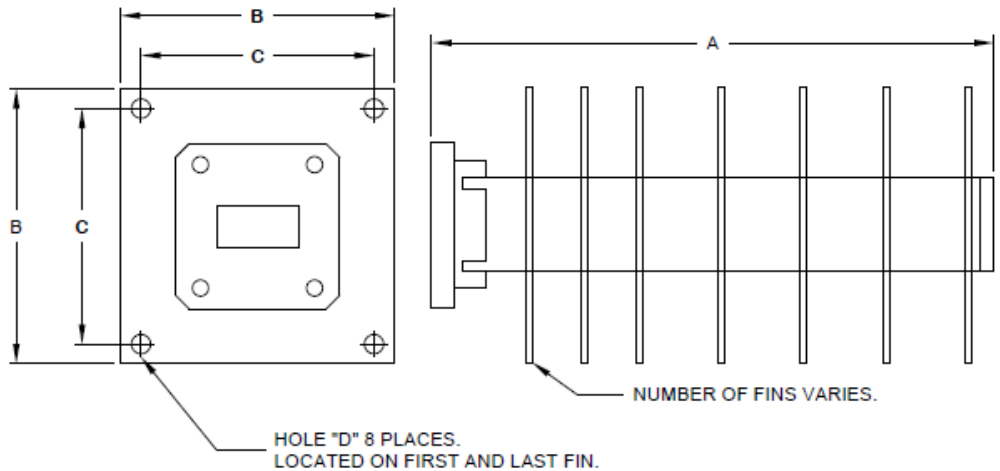


Ultra-High Power Termination Description

- Operating Frequency 1.70 – 18.00 GHz
- Full band VSWR 1.10:1 MAX
- Power Handling 2200 to 5000 WATTS
- Waveguide Is Standard Copper/Brass or Aluminum (6061)
- Pressurized
- Finish: High Temperature Flat Black*
- RoHS Compliant

Waveguide Flanges:

1. Cover
2. Choke
3. CPRF
4. CPRG
5. CMR
6. Cover Grooved
7. CAR
8. PAR
9. UAR
10. CBR
11. PBR
12. UBR
13. UDR
14. RDR
15. PDR



Special Flange List As: FSXX

P/N	WR Size	Freq. (GHz)	Power Handling (W)	Dim "A" (in)	Dim "B" (in)	Dim "C" (in)	Dim "D" (in)
2430	62	12.40 - 18.00	2200	19.00	5.00	4.00	0.265
2431	75	10.00 - 15.00	2200	19.00	5.00	4.00	0.265
2432	90	8.20 - 12.40	2200	19.00	5.00	4.00	0.265
2433	112	7.05 - 10.00	2200	19.00	5.00	4.00	0.265
2434	137	5.85 - 8.20	3500	19.00	5.00	4.00	0.265
2435	159	4.90 - 7.05	3500	19.00	5.00	4.00	0.265
2436	187	3.95 - 5.85	3500	14.00	5.00	4.00	0.265
2470	229	3.30 - 4.90	4000	24.00	7.50	6.50	0.265
2471	284	2.60 - 3.95	4000	18.00	7.50	6.50	0.265
2472	430	1.70 - 2.60	5000	18.00	8.00	7.00	0.265

Part Number Example: 2430-1A

P/N	Flange	Material A=Aluminum B=Brass
2430	1	A

*Other finishes are available upon request