

# Coaxial RF Transformer

50Ω

0.1 to 400 MHz

FT1.5-1



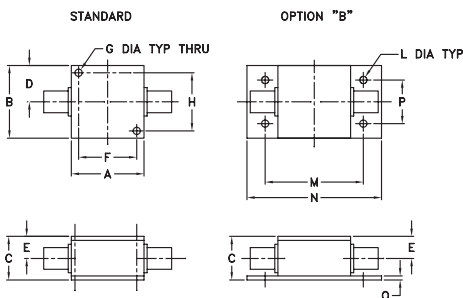
## Maximum Ratings

Operating Temperature	-55°C to 100°C
Storage Temperature	-55°C to 100°C
RF Power	250mW
DC Current	30mA

## Coaxial Connections

	Marking
PRIMARY	50
SECONDARY	75

## Outline Drawing



## Outline Dimensions (inch/mm)

A	B	C	D	E	F	G	H
1.25	1.25	.75	.63	.38	1.000	.125	1.000
7.11	31.75	19.05	16.00	9.65	25.40	3.18	25.40

J	K	L	M	N	P	Q	wt
--	--	.125	1.688	2.18	.75	.07	grams
--	--	3.18	42.88	55.37	19.05	1.78	70.0

## Features

- wideband, 0.1 to 400 MHz
- good return loss

## Applications

- impedance matching

CASE STYLE: H16

BNC Connectors	Model	Price	Qty.
FEMALE/FEMALE	FT1.5-1*A16	\$35.95	(1-9)
FEMALE/MALE	FT1.5-1*B16	\$35.95	(1-9)
MALE/FEMALE	FT1.5-1*C16	\$35.95	(1-9)
BRACKET (OPTION "B")		\$2.50	(1+)

## Transformer Electrical Specifications

MODEL NO.	Ω RATIO	FREQUENCY (MHz)	INSERTION LOSS*		
			3 dB MHz	2 dB MHz	1 dB MHz
FT1.5-1	1.5	0.1-400	0.1-400	0.5-200	1-100

\* Insertion Loss is referenced to mid-band loss, 0.3 dB typ.

## Typical Performance Data

FREQUENCY (MHz)	INSERTION LOSS (dB)	INPUT R. LOSS (dB)
0.10	1.79	7.10
0.61	0.65	18.61
1.27	0.55	20.63
5.03	0.35	24.38
10.86	0.33	25.10
22.53	0.35	24.87
49.60	0.39	22.83
149.65	0.58	15.96
201.16	0.61	13.38
400.00	1.67	6.07

## Config. D

